

Silvia Cecchi Quatani

IL DIRIGENTE SOCIÁSTICO
Prof.ssa ELSA PERLETTI

FLAUTO

SONATE

per flauto e basso continuo

Op. 2

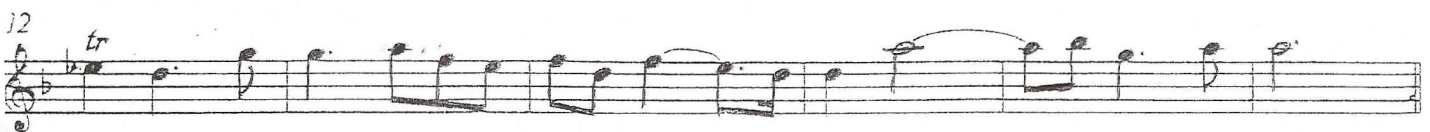
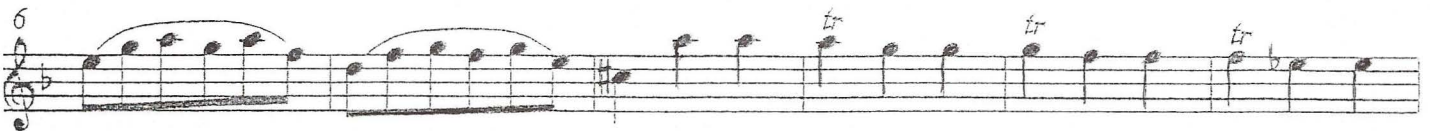
SONATA I

Op. 2, No. 1

Benedetto Marcello
(1686-1739)

Edited and continuo realization by
István Máriássy

Largo



Allegro

Musical score for flute, measures 1-28. The score is written in treble clef with a key signature of one flat (B-flat) and a time signature of 12/8. The tempo is marked 'Allegro'. The piece consists of ten staves of music. Measure numbers 4, 7, 10, 13, 16, 19, 22, 25, and 28 are indicated at the beginning of their respective staves. The music features a mix of eighth and sixteenth notes, often beamed together, and rests. A double bar line with repeat dots appears at the end of measure 7. A dynamic marking 'p' (piano) is placed below the staff at the beginning of measure 28. The score concludes with a double bar line and repeat dots at the end of measure 28.

IL DIRIGENTE SCOLASTICO
Prof.ssa ELSA PERLETTI

Antonio Sileo Cavale 